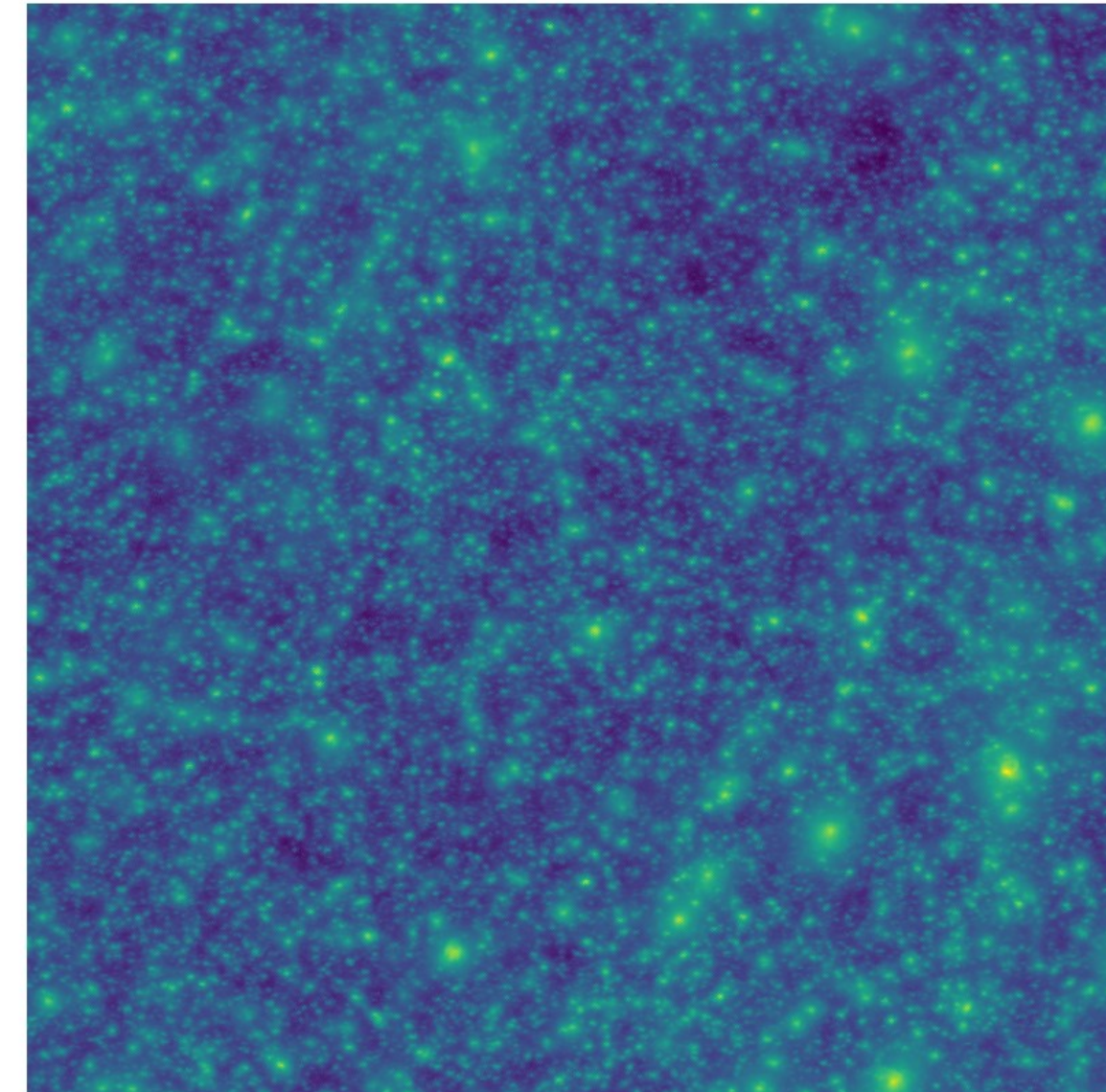


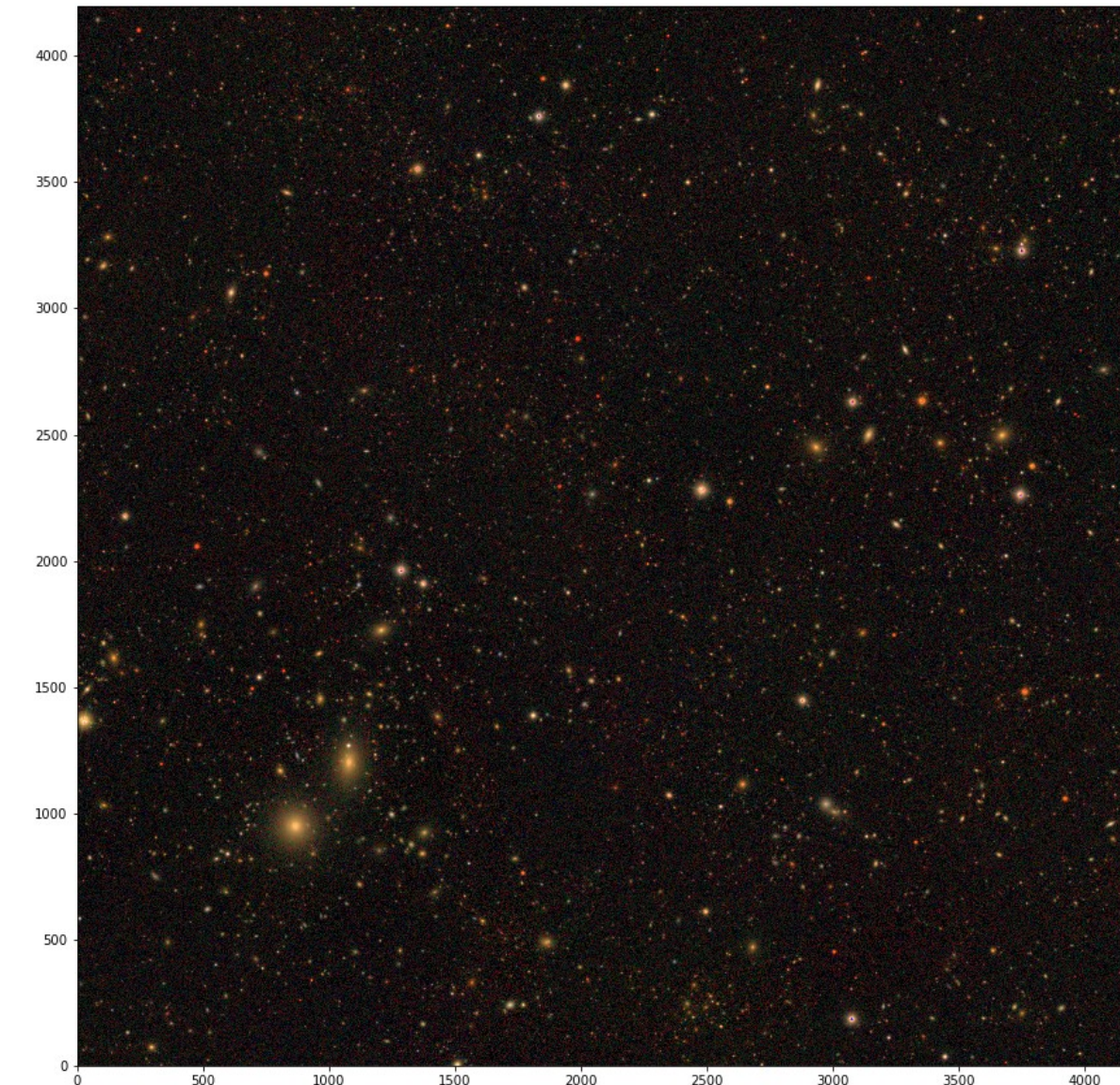
Patricia Larsen - CPS

- Cosmological simulation development with the HACC framework – I work mostly in simulation post-processing to make observational counterparts. E.g. Sunyaev-Zeldovich maps, weak lensing signals, lightcone catalogs, cluster cutouts.
- Cosmological emulator creation and validation as part of a couple of different projects for use in theoretical modeling and subgrid parameter optimization.
- Computing infrastructure scientist for LSST-DESC, validating galaxy catalog data and providing simulations support.

subgrid tSZ



Section of SZ map from recent hydro simulations – HACC team



Optical image from DC2 simulation

Dominique Boutigny (LAPP) and LSST-DESC collaboration

